



◆ ◆ ◆ ◆ ◆ ◆ ◆ ◆ Hello Kitty® ◆ ◆ ◆ ◆ ◆ ◆ ◆ ◆

© 1976, 2007 Sanrio Co., Ltd.

DIGITAL PHOTO FRAME/ MP3 PLAYER WITH BUILT-IN 64MB.



OWNER'S MANUAL
KT4601

PLEASE READ THIS OPERATING MANUAL COMPLETELY
BEFORE OPERATING THIS UNIT AND RETAIN THIS BOOKLET
FOR FUTURE REFERENCE.

Dear Hello Kitty® Customer:

We have taken great care to make sure that this unit was in perfect working order when it left the factory. It has been designed to give you many years of enjoyment and trouble free operation. Read this manual before operating this unit to become familiar with its features and obtain the performance that will bring you continued enjoyment for many years.

For future reference, record the serial number in the space provided.

Model Number: KT4601

Serial Number: _____

Table of contents:

Table of contents	1
Safety Information	2
Battery information	2
Compliance with FCC regulations	2
1. Introduction	3
2. Locations of controls	4
3. Operating guide	
• Download/ remove files	6
• Power on/ off	7
• Play music	7
4. Picture viewing	8
5. Play movie	9
6. Play recorded voice files	10
7. Record mode	11
8. System settings	12
9. Delete	15
10.DRM.....	16
11.Video Conversion (SMV file).....	20
12.Troubleshooting.....	22
13.Specifications	23
14.Service	24

Safety Information:

- Do not attempt to disassemble or alter any part of the unit that is not expressly described in this guide. Internal inspections, alternations and repairs should be conducted by qualified service personnel.
- Prevent liquids such as water and beverage from flowing into the product.
- Do not use the product where electric appliances are prohibited.
- Protect the product from violent impact and vibration.
- Place the product far away from heat sources, and protect the product from direct sunlight.
- No compensation responsibility for malfunctions caused by improper use.
- It is prohibited to conduct illegal audio recording.
- Save the data in the memory of the product to other storage device before repair. No compensation responsibility if the data are lost during repair.

Battery Information:

For the first use of the product, you are recommended to fully charge your unit. (If the battery capacity sign appears blank, it indicates the unit needs to recharge.) Connect the provided USB cable correctly and charge the battery until the sign is fully displayed. The charge time is approx.8 hours.

Compliance with FCC Regulations:

This equipment has been tested and found to comply with the limits for a Class B digital device, pursuant to Part 15 of the FCC Rules. These limits are designed to provide reasonable protection against harmful interference in a residential installation.

This equipment generates, uses and can radiate radio frequency energy and, if not installed and used in accordance with the instructions, may cause harmful interference to radio communications. However, there is no guarantee that interference will not occur in a particular installation. If this equipment does cause harmful interference to radio or television reception, which can be determined by turning the equipment off and on, the user is encouraged to try to correct the interference by one or more of the following measures:

- Reorientate or relocate the receiving antenna.
- Increase the separation between the equipment and receiver.
- Connect the equipment into an outlet on a circuit different from that to which the receiver is connected.
- Consult the dealer or an experienced radio technician for help.

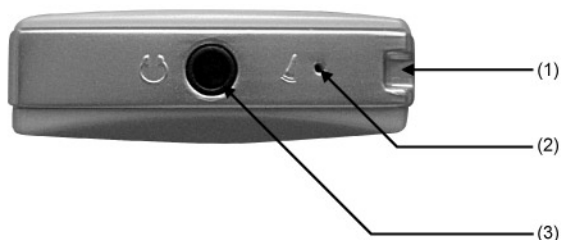
NOTE: THE MANUFACTURER IS NOT RESPONSIBLE FOR ANY RADIO OR TV INTERFERENCE CAUSED BY UNAUTHORIZED MODIFICATIONS TO THIS EQUIPMENT. SUCH MODIFICATIONS COULD VOID THE USER'S AUTHORITY TO OPERATE THE EQUIPMENT.

1. Introduction

- Support of audio formats: MP3 and WMA
- Voice can be recorded through a microphone and saved as a voice file in WAV format.
- Six sound effect modes: Normal, Rock, Jazz, Classic, Pop, and Bass.
- Multiple playing modes: Normal mode, Play current music repeatedly, Play all music repeatedly, Play all music at random, Play all music repeatedly at random and Introduction.
- Picture viewing: Support JPEG and BITMAP formats.
- Movie viewer: Support SMV format. (SMV format conversion software is provides in the CD-Rom)
- Auto power-off function.
- Built-in lithium battery that charged by PC USB connection.
- 1.5" 65K color TFT LCD.

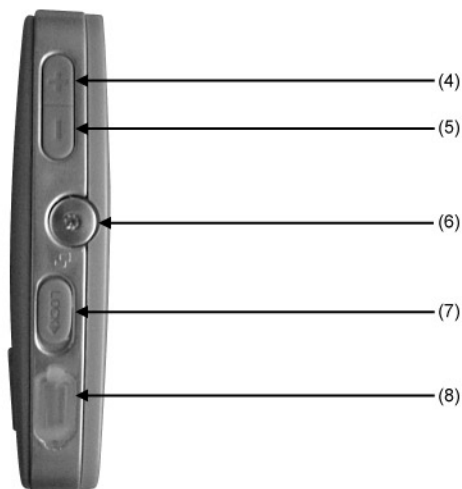
2. Locations of controls

TOP PANEL



- (1) Neck-strap opening
- (2) MIC hole
- (3) Headphone jack
- (4) "+" Volume increase
- (5) "-" Volume decrease

RIGHT PANEL

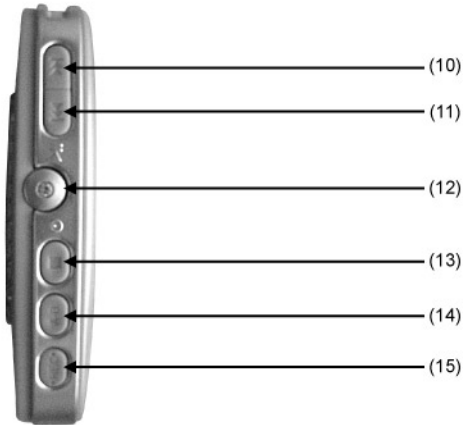


- (6) "MENU" key
- (7) "LOCK" key
- (8) USB jack
- (9) SD card slot

BOTTOM PANEL

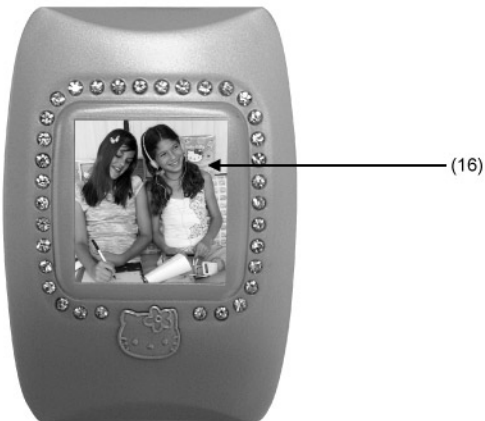


LEFT PANEL



- (10) "SKIP ◀◀" (Previous song key)
- (11) "SKIP ▶▶" (Next song key)
- (12) "Play/ Pause/ Power- ON/OFF" key
- (13) "Stop" key
- (14) "A-B" repeat key
- (15) "REC/ EQ" key
- (16) LCD display
- (17) RESET hole

FRONT PANEL



BACK PANEL



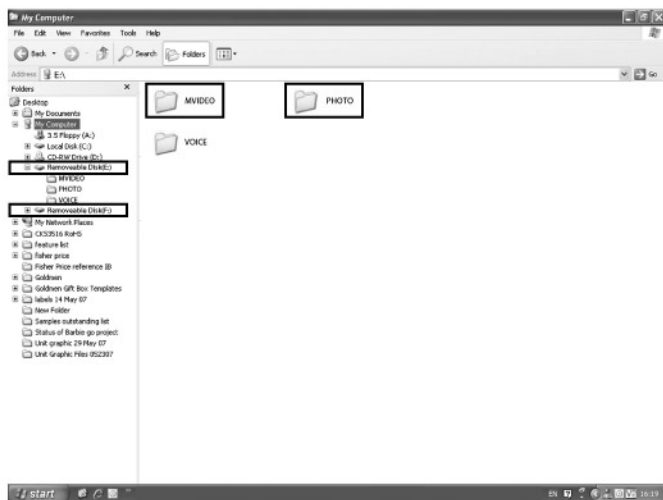
3. Operating guide

- Before use

- Press the rear panel RESET button with a pointed object to initialize the unit before use.
- There is a neckstrap provided with this unit. If you experience difficulty when inserting the cord through the hanger hole, we suggest using a straight pin or paperclip to assist in guiding the cord through the hole.

- Download/ remove files

- Use the USB cable to connect the unit with your computer. There is no need to install driver for Win VISTA/WinXP/ME/2000. It is necessary to install the driver in the accompanying CD for Win98 and below before download/ remove files.
- After successful connection, two "removable hard disks" are generated automatically in your computer. (The drive names may vary for different computer.)



- The first "removable hard disk" is the internal memory of the unit. Three folders are created in this hard disk to distinguish different file types: "MVIDEO" is a folder to hold SMV video files; "PHOTO" is a folder to hold pictures; "VOICE" is a folder to hold recorded voice files.
- The second "removable hard disk" is the expanded memory of the product (the inserted SD card). After a SD card is inserted, 2 folders have to be created BY THE USER in the second "removable hard disk". These folders are used to store SMV files and picture files respectively. (The second "removable hard disk", "MVIDEO" (for video) and "PHOTO" (for pictures) can be opened when a SD card inserted.)
- For the picture and video files, they must be saved in "PHOTO" and "MVIDEO" folders. In these folders, additional folders cannot be read.
- MP3 music files can be copied to first and second "removable hard disk" without creating specific folder.
- Select files in the computer to download. Then, copy and paste them to a relative folder of a removable hard disk.
- Keep the USB cable connected during copy and paste operation. After the downloading is finished, remove the USB cable.

When you want to remove song files from your unit, you can delete them through your computer or directly from your unit's DELETE function.

- Power on/ off

- Power on: Press and hold "Play/ Pause/ Power-On/ Off" key to start your Unit.



Loading.....

- Power off: Press and hold "Play/ Pause/ Power- On/ Off" key until the following power-off screen appears. The power is turned off.



Bye-Bye

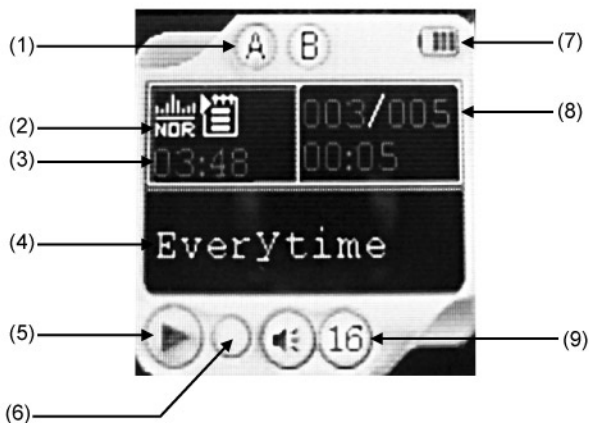
- Play music

After the power is turned on, the music playing interface appears by default.

This unit supports MP3 and WMA music formats.

Press "SKIP ◀◀" or "SKIP ▶▶" key to select a different song. Press "+" or "-" to increase or decrease volume. After select a music file, press "Play/ Pause/ Power-ON/ OFF" key to enter the playing interface and start playing.

Playing interface of LCD:



- (1) "A-B" repeat icon
- (2) EQ setting icon
- (3) Current track length
- (4) Track title
- (5) PLAY/ PAUSE/ STOP status
- (6) Lock status
- (7) Battery status sign
- (8) Total number of tracks and current playing tracks no.
- (9) Volume

During music playback, press "Play/ Pause/ Power-ON/OFF" key to pause the music and press again to resume. Pressing "Stop" key to stop the playback.

Tap "SKIP ◀▶" key to select your favourite song. Press and hold these keys can search the music.

Press "A-B" repeat key can define the certain music period to repeat. Tap once to define the position A. Tap again to define position B and the unit will repeat "A-B" period again and again.

Press and hold "MENU" key can go to the main menu for other function modes.

During the music playback, press "REC" key to switch the options of EQ setting. Normal, Rock, Jazz, Classic, Pop, and Bass. EQ sound effect is changed accordingly as a mode is changed.

4. Picture Viewing

After turn on the power, press "MENU" key to enter the main menu. Press "SKIP ▶▶" key to select and go to "Jpeg" interface.



Press "MENU" key and "Jpeg" picture viewing options appear. Total four options are available used to select Jpeg picture viewing mode.



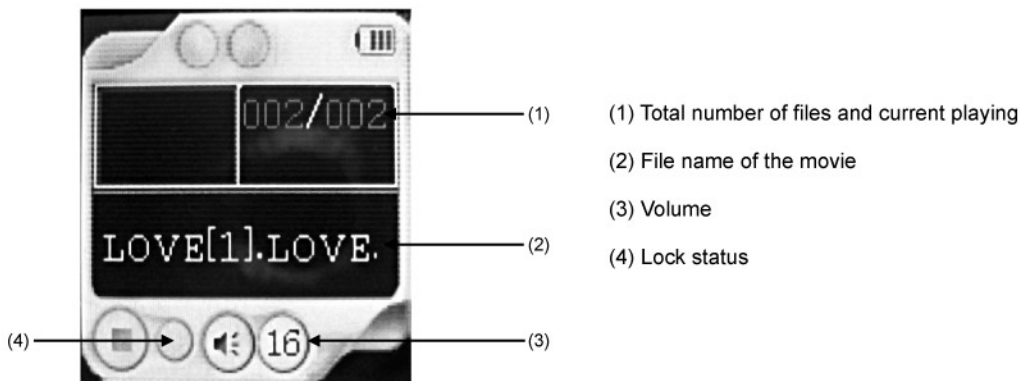
- (1) Manual viewing mode
- (2) Automatic viewing mode
- (3) Four thumbnails viewing mode
- (4) Exit and return to the main menu

Press "SKIP ◀◀" or "SKIP ▶▶" key to switch among different options. Press "MENU" key to enter the selected mode and start viewing pictures. In "Manual viewing mode", press "SKIP ◀◀"/ "SKIP ▶▶" key to switch between previous and next picture and view them.

Select "Exit" and press "MENU" key to exit and return to the main menu.

5. Play Movie

After turn on the power, press "MENU" key to enter the main menu. Press "SKIP ◀◀" / "SKIP ▶▶" key to select and go to "Video" interface. Press "MENU" key to enter movie playing interface. Press "Play/ Pause/ Power-ON/ OFF" key to start playing movie.



- During video playback, press "Play/ Pause/ Power-ON/OFF" key to pause the video and press again to resume. Pressing "STOP" key to stop the playback.

- In movie playing mode, press "SKIP ◀◀" / "SKIP ▶▶" key to play previous/ next file. Press and hold "SKIP ◀◀" / "SKIP ▶▶" key, and the currently played movie file will be fast backward or forward and then be played.

For the SMV files setting, please refer to the "Video Conversion" section in this manual.

6. Play the record voice files

After turn on the power, press “MENU” key to enter the main menu. Press “SKIP ◀◀”/ “SKIP ▶▶” key to select and go to Voice interface.



Press “MENU” key to enter Voice playing interface:



Press “SKIP ◀◀”/ “SKIP ▶▶” key to select a different recorded voice file. After select a recorded voice file, press “Play/ Pause/ Power-ON/ OFF” key to start playing the recorded voice file.

- In recorded voice file playing mode, press “+” or “-” to increase or decrease volume. Press “SKIP ◀◀”/ “SKIP ▶▶” key to play previous/ next recorded voice file. Press and hold “SKIP ◀◀”/ “SKIP ▶▶” key, and the currently played voice file will be fast backward or forward and then be continually played.

7. Record mode

After turn on the power, press and hold "MENU" key to enter the main menu. Press "SKIP◀◀"/"SKIP▶▶" key to select "Record" mode.



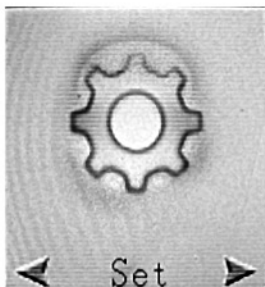
Press "MENU" key to enter to start recording or directly press "REC" key to enter Record mode and start recording.

Press "REC" key to stop recording and return to the default music mode when the power is turned on:



8. System Settings

After turn on the power, press "MENU" key to enter the main menu. Press "SKIP ◀◀"/"SKIP ▶▶" key to select and go to "SET" interface.



Press "MENU" key to enter "SET" interface. Play mode, About (memory information), Power (power management), REC SET (recording settings) and EXIT.

- Play mode Settings

In "PLAY MODE" interface, press "SKIP ◀◀"/"SKIP ▶▶" key to select and go to "Play mode" interface.

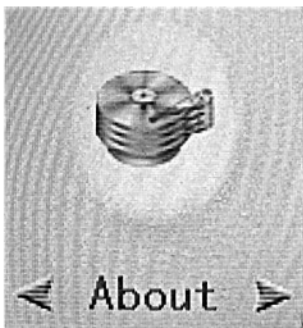


Press "SKIP ◀◀"/"SKIP ▶▶" key to switch among the six modes: Normal, Repeat one (play a single song repeatedly), Repeat all (play all songs repeatedly), Shuffle (play at random), Repeat Shuffle (play repeatedly at random) and Intro.

Press "MENU" key to confirm the current settings and return to "Play mode" interface.

- About

In "SET" interface, press "SKIP ◀◀" / "SKIP ▶▶" key to select and go to "About" interface.



In "About" interface, press "MENU" key. Parameters of software version, memory capacity, and currently available space of the unit appear.



Press "MENU" key to return to "SET" interface.

- Power management

In "SET" interface, press "SKIP ◀◀" / "SKIP ▶▶" key to select and go to "Power" interface. This function is used to select an automatic power-off mode while the unit is in standby mode without any operation.



In "Power" interface, press "MENU" key. Five options of power management appear.

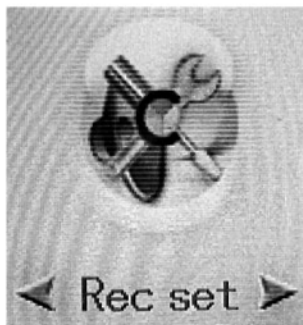


Press "SKIP ◀◀"/ "SKIP ▶▶" key to switch among: Disable (disable automatic power-off function), 1 minute (one minute power-off mode), 2 minutes (two minute power-off mode), 5 minutes (five minute power-off mode), and 10 minutes (ten minute power-off mode).

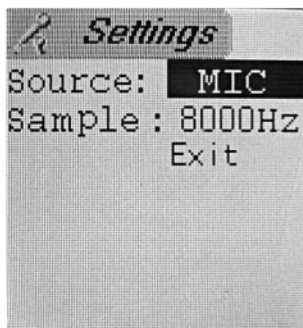
Press "MENU" key to save the current settings and return to "SET" interface.

- Record setting

In "SET" interface, press "SKIP ◀◀"/ "SKIP ▶▶" key to select and go to "REC SET" interface.



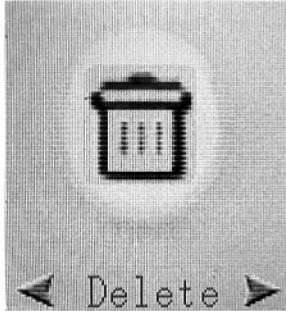
In "REC SET" interface, press "MENU" key to enter.



Press "SKIP ◀◀"/ "SKIP ▶▶" key to select sampling rate and press "A-B" key to switch seven options: 8KHz, 11.025KHz, 16KHz, 22.05KHz, 32KHz, 44.1KHz and 48KHz. The higher sampling rate, the better voice recording quality.

9. Delete

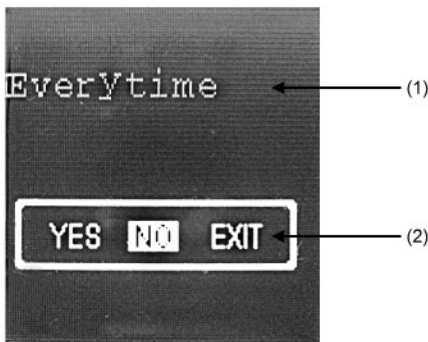
After turn on the power, press “MENU” key to enter the main menu. Press “SKIP◀◀”/“SKIP▶▶” key to select and go to “Delete” interface.



In “Delete” interface, press “MENU” key to enter the options of “delete”.



Press “SKIP◀◀”/“SKIP▶▶” key to switch among the five options: Music (delete a single song), All Music (delete all songs), Voice (delete a single voice file), All Voice (delete all voice files), and Exit. After select the item you want to delete, press “MENU” key to enter “Delete” confirmation interface:



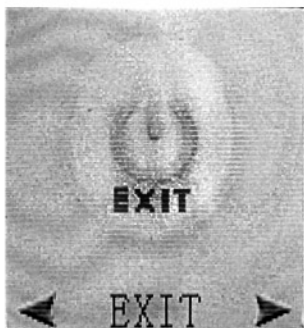
(1) The file to be deleted

(2) Three options used for “delete” confirmation

The three options are YES, NO, and EXIT. Press “SKIPI◀◀”/“SKIP▶▶” key to switch among them. Press “MENU” key to perform the related operation.

- Exit

In "SET" interface, press "SKIP ◀◀"/ "SKIP ▶▶" key to select and go to "Exit" interface. The option is used to return to "SET" interface.



10. DRM 9

What is DRM?

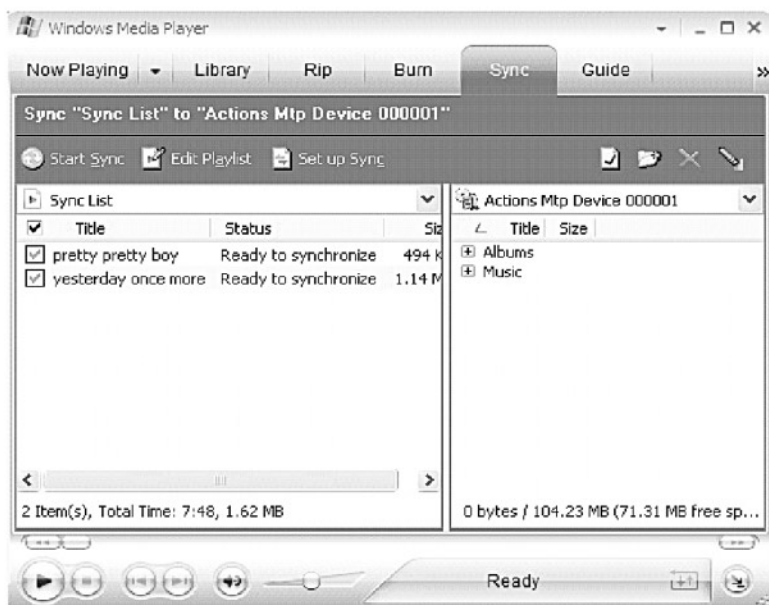
It stands for digital right management, a technology used to protect digital products from copyright infringement. When a customer buys a DRM-protected music download, the download is encrypted specifically for that customer. To allow the customer to use the file on a separate MP3 player they must link the DRM enabled player to Windows Media Player 10 and link both applications. This allows the downloaded music files to then be used on a separate digital music player.

How to synchronize the DRM songs into yours MP3 player?

1. Purchase DRM songs from the internet, and download them into your computer.
2. Playback the songs that you downloaded, if it plays, the download was successful. If not then you need to download again.
3. To use the DRM function, the computer OS must be Windows XP system SP2 or higher version, installed with Windows Media player 10 (or above) and have an active internet connection.
4. Connect the DRM MP3 player to your PC.

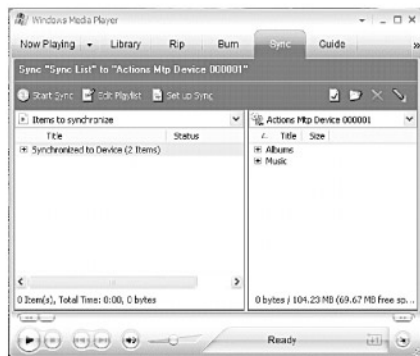
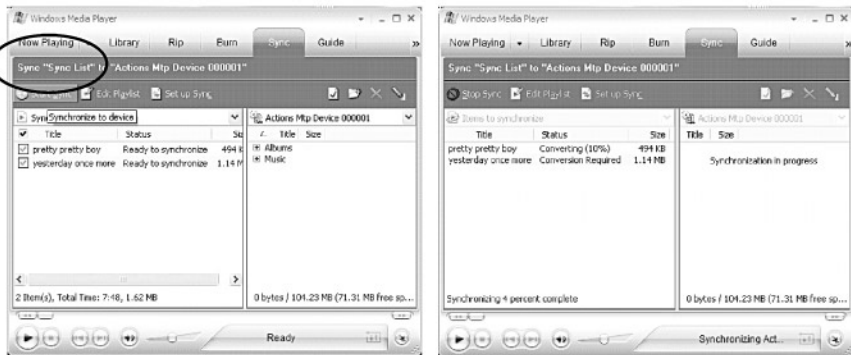
How to set your MP3 player DRM download?

- (1) Connect the player to your computer using the provided USB cable.
- (2) Launch Windows Media Player on the computer and select "SYNC tag". The software will automatically detect the player as a Media Player. (You may need to press the F5 button on the keyboard to find your player.)
- (3) Once your computer detects the player, it will display the following menu. You can now choose to synchronize your music automatically or manually. When Automatic is selected, Windows Media Player will automatically synchronize all the library music into the player or until the players memory is full.
- (4) For Manual, select "Manual" and click "Finish", it will display:

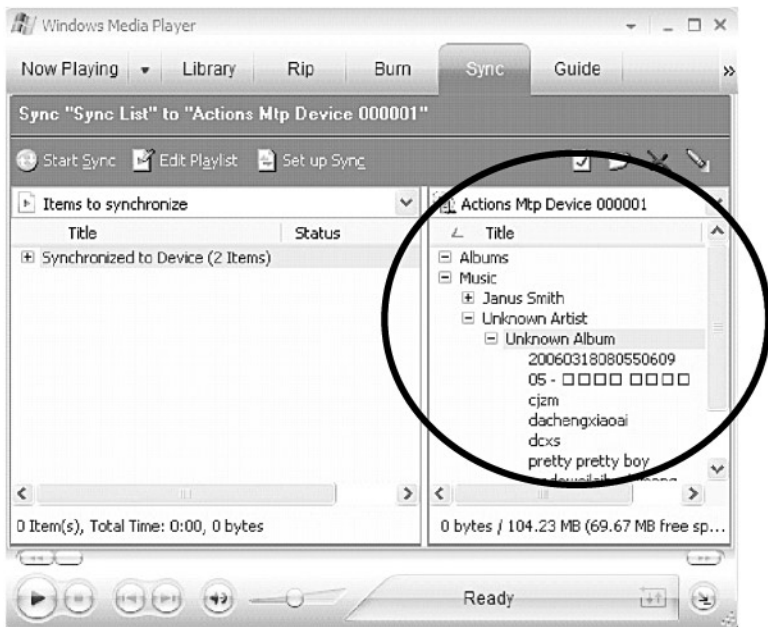


- (5) Add the songs that you want to synchronize into the Sync List.

(6) Click "Start Sync".



(7) The frame will display the synchronized songs.



Removing the unit from the computer

Note: Please follow these steps to avoid damaging the player or losing data.

- (1) Double-click on the “Safely Remove Hardware” icon (green arrow) in the system tray of your Windows desktop (see diagrams below for illustration).
- (2) Click stop in the “Remove Hardware Device” dialog window.
- (3) You will be asked which device you want to stop. Choose the player and click OK to continue.
- (4) The “Safely Remove Hardware” window will appear to confirm that it safe to remove the player. Click OK to continue.
- (5) Now you can safely disconnect the player from the computer.



1



2

3



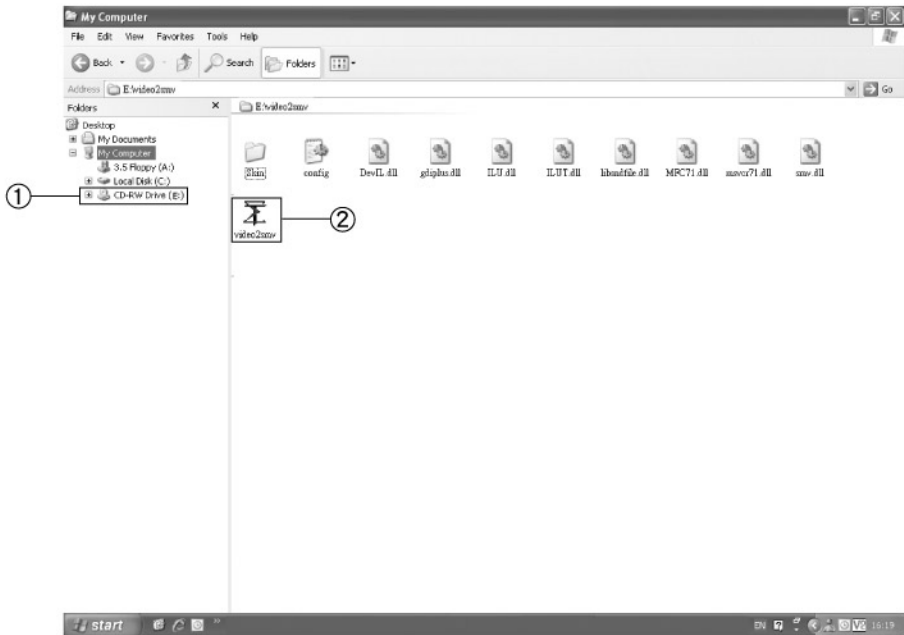
4



11. Video Conversion (SMV file)

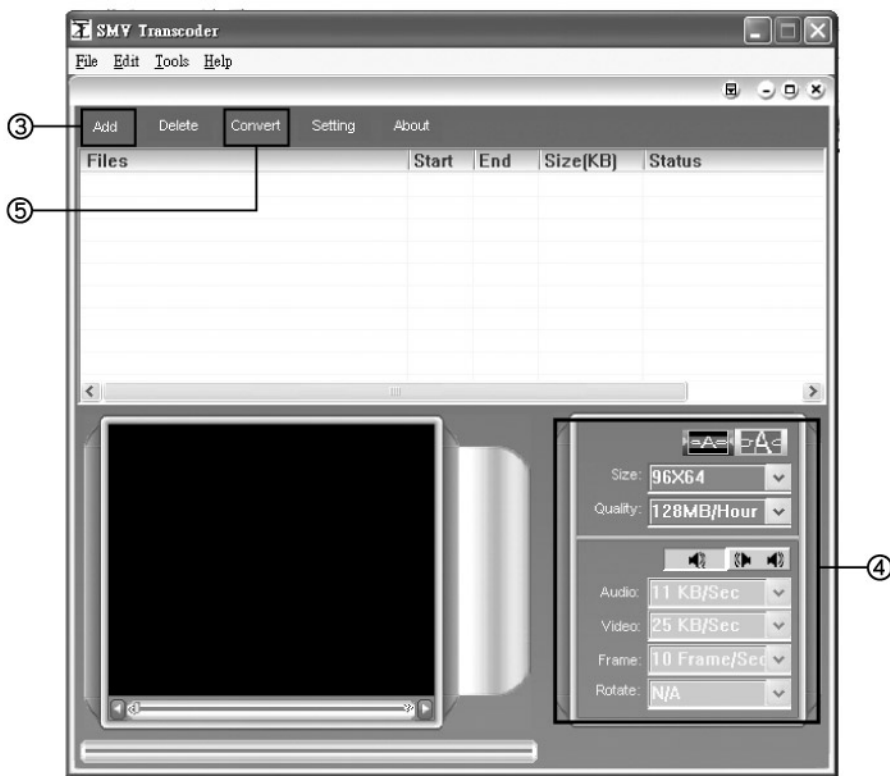
This unit is able to play video files (SMV format). SMV file is the special format that converted by attached video conversion software (in CD-ROM). It supports AVI, MPG, WMV, Real player file, Quick time file, DVD file and MP4 file formats. (Different file format compatibility may vary with different encoding.)

1. Insert the Installation CD in the CD-ROM drive .Open drive X:video2smv/video2smv.exe.



2. Click "Add" to select the support video file format. Certain settings can be done on the bottom right of the software interface. (Size cannot be set higher than 128x128)

3. Once the setting completes, click "Convert" to start the conversion process.



4. After the video conversion process completes, the converted SMV file has to be copied in first or second "removable hard disk's MVIDEO folder (bold). Now, the SMV is ready to play in the unit.

For Windows 98 user, CD-ROM Sigmatal tools (CD Drive X:\Sigmatal_tools\SETUP.exe) must be installed prior to copy the SMV files.

12. Troubleshooting

<i>Problem</i>	<i>Possible reason</i>	<i>Remedy</i>
No display	The battery is used up	Change the battery
	Wrong operation	Press Reset key to re-start the unit
	Power-on key is not pressed	Press Power-on key to start the unit
Do not play	No music file is present	Download music files
	Too low volume	Adjust the volume
	In lock mode	Unlock the unit
Do not record	In other operating mode	Return to the default music mode
	No disk space for recording	Delete some files and make space for recording
	In lock mode	Push LOCK key to Unlock position
No sound	Too low volume	Adjust the volume
	The headphone is not securely inserted	Securely insert the headphone

13. Specifications

Storage capacity	64M (User accessible: 40MB)
	Externally expanded SD card (support maximum 2G)
Power supply	Built- in lithium battery, 3.7- 4.2v/ 380mAH
LCD screen	1.5" 65K color TFT LCD
Microphone	Built- in capacitor microphone
Sampling rate for recording	8KHz, 11.025KHz, 16KHz, 22.05KHz, 32KHz, 44.1KHz and 48KHz
Recorded file format	WAV
Music file format	MP3 and WMA
Output frequency range	20Hz - 20KHz
Support compression ration	32Kbps - 320Kbps
Signal-to-Noise Ratio	105dB
Dimension	76 X 53 X 16.5 mm / 3 X 2 X 0.64 inches
Weight	96 grams/ 3.39 ounces
Compatible Operation System	Windows Vista/ XP/ 2000/ ME/ 98SE

14. Service

Please refer to the instructions on the enclosed warranty card for returning your unit for service.

Distributed by:
Spectra Merchandising International, Inc.
Chicago Industry Tech Park
4230 North Normandy Avenue
Chicago, IL60634, U.S.A.

Please have model number ready for Customer Service, call 1-800-777-5331.

Printed in China
© 1976, 2007 Sanrio Co., Ltd.